

Vulnérabilité génétique et biomarqueurs

Pr Yann Le Strat

Service de psychiatrie et addictologie

Hôpital Louis Mourier, Colombes

Institut de Psychiatrie et Neurosciences de Paris

Substances, biologie et environnement



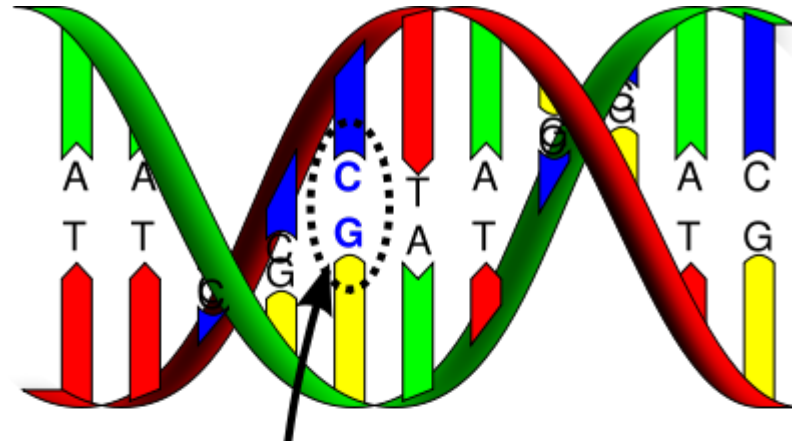
L'agrégation familiale



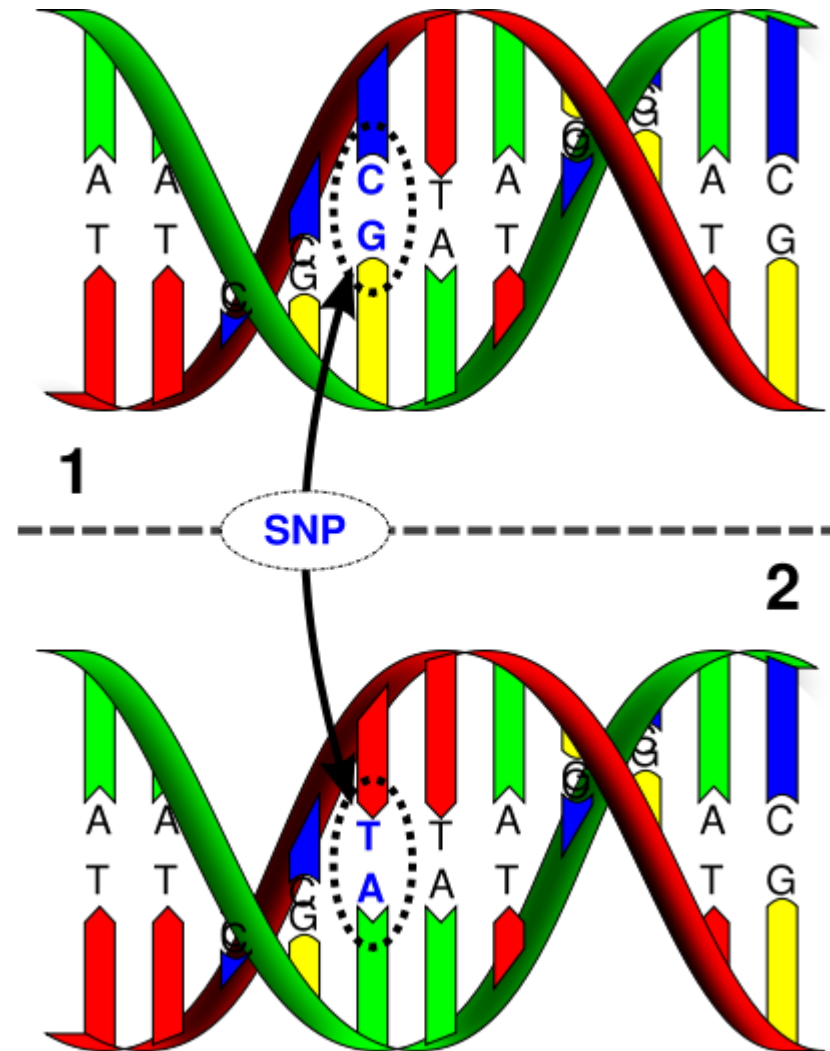
L'héritabilité



Ce qui est transmis

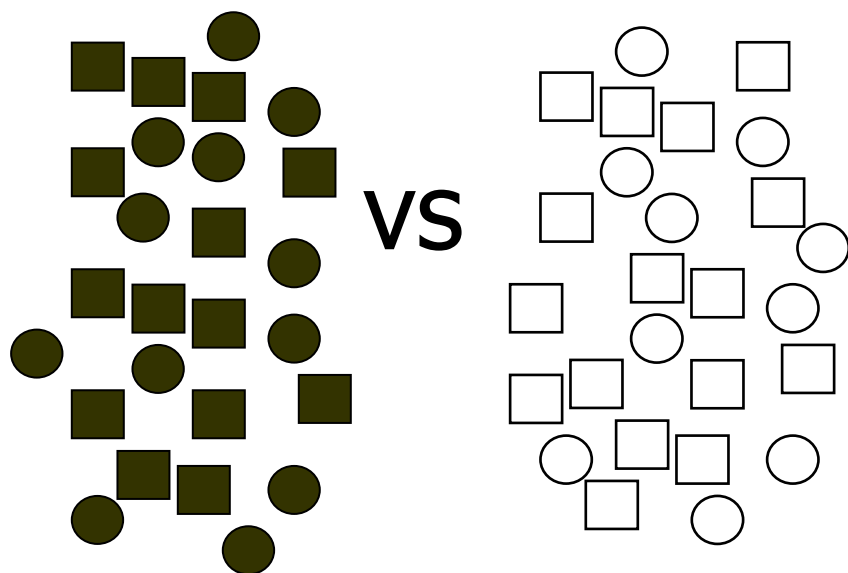


..et comment l'étudier: les SNPs (Single Nucleotide Polymorphisms)

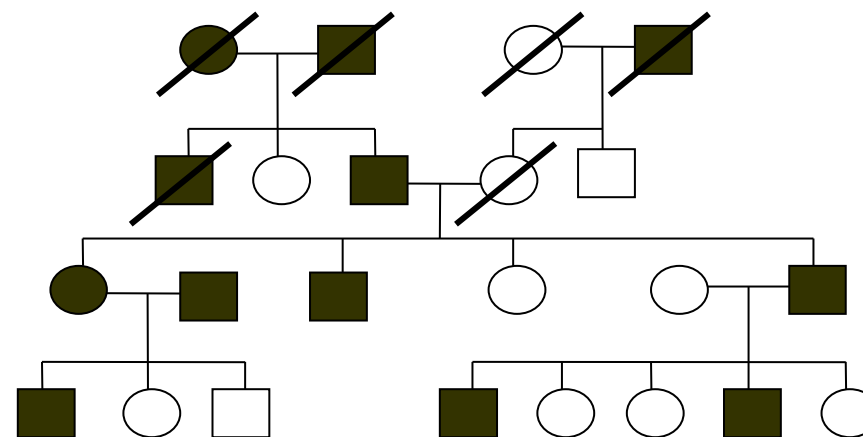


Comment l'étudier?

Étude d'association



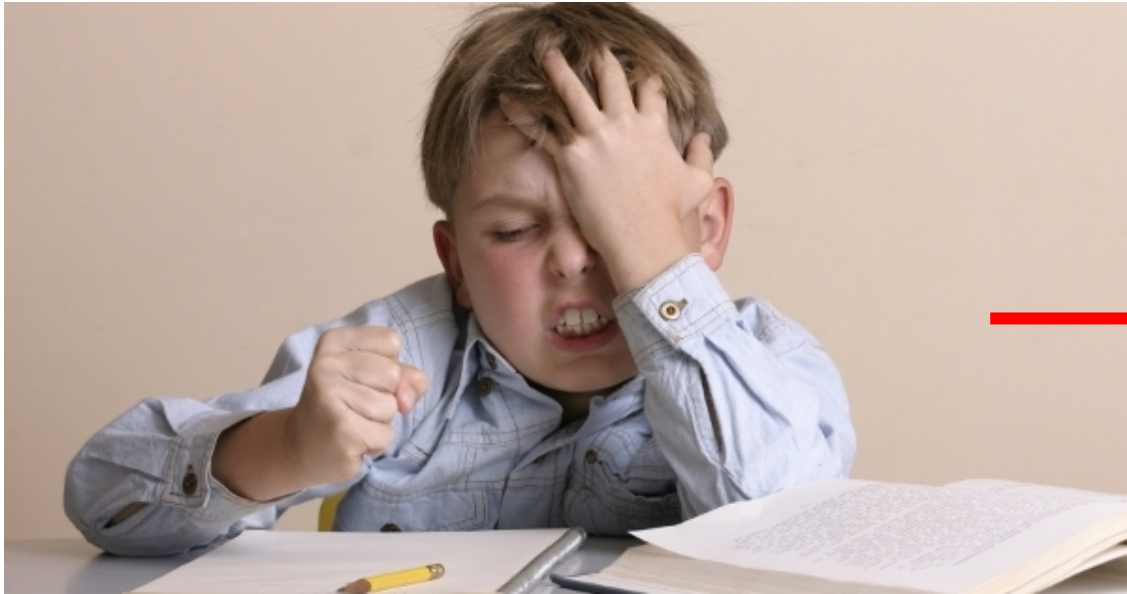
Étude de liaison



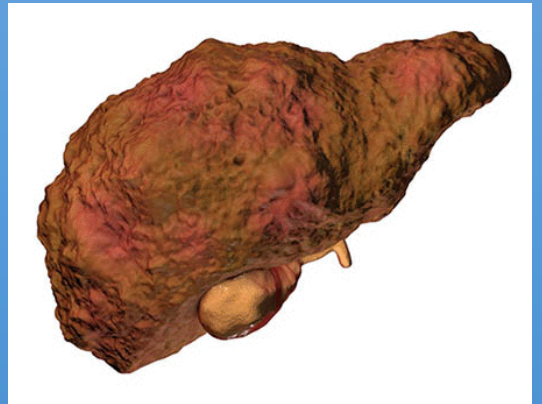
Ce qui est transmis...le phénotype



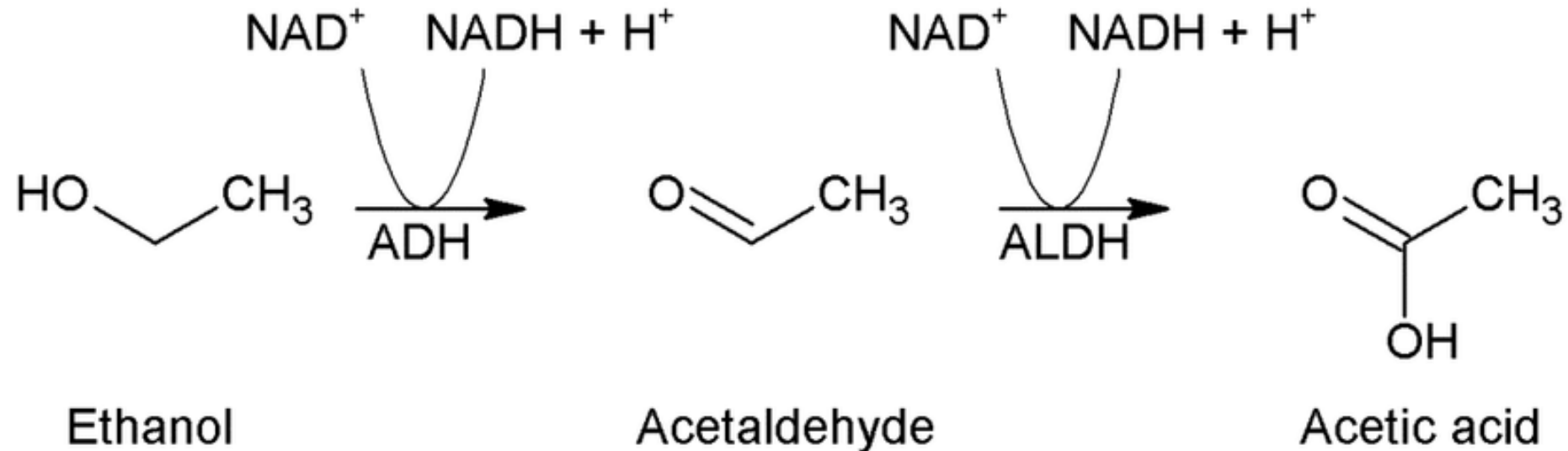
L'impulsivité, objet de science



L'influence génétique



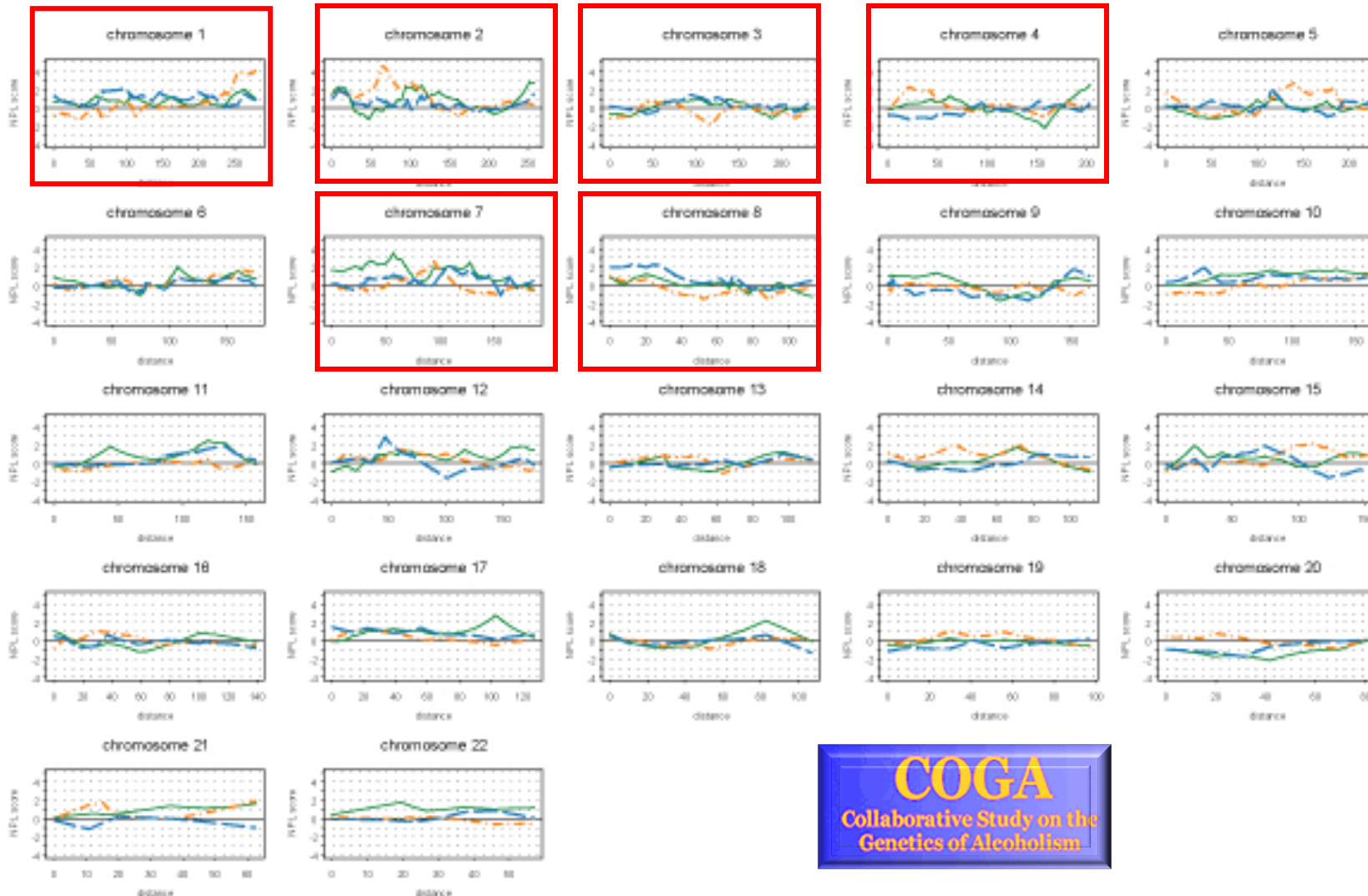
De la biochimie à la clinique de la vie quotidienne



Conséquences de l'accumulation d'acétaldehyde

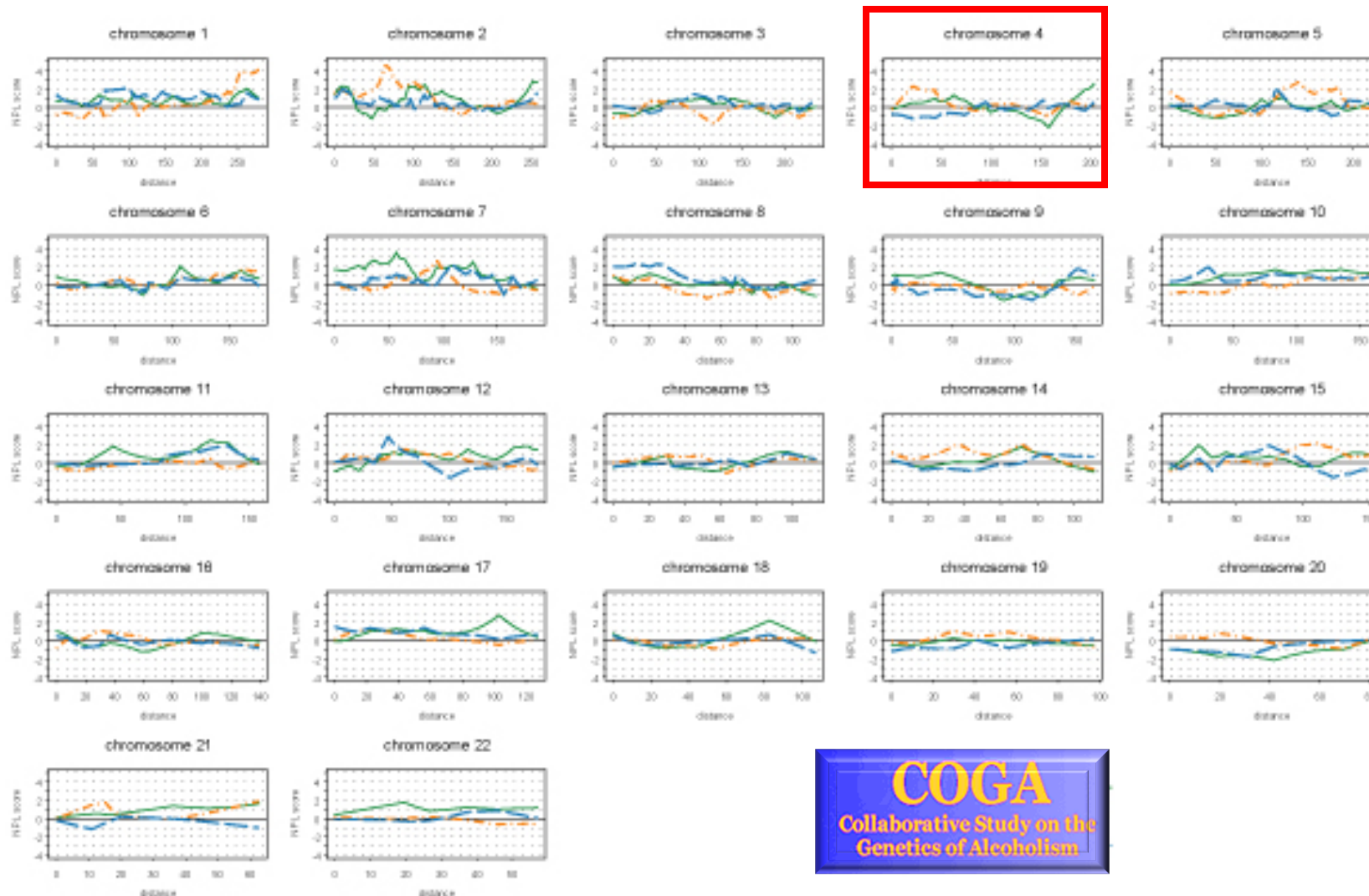


Études de liaison



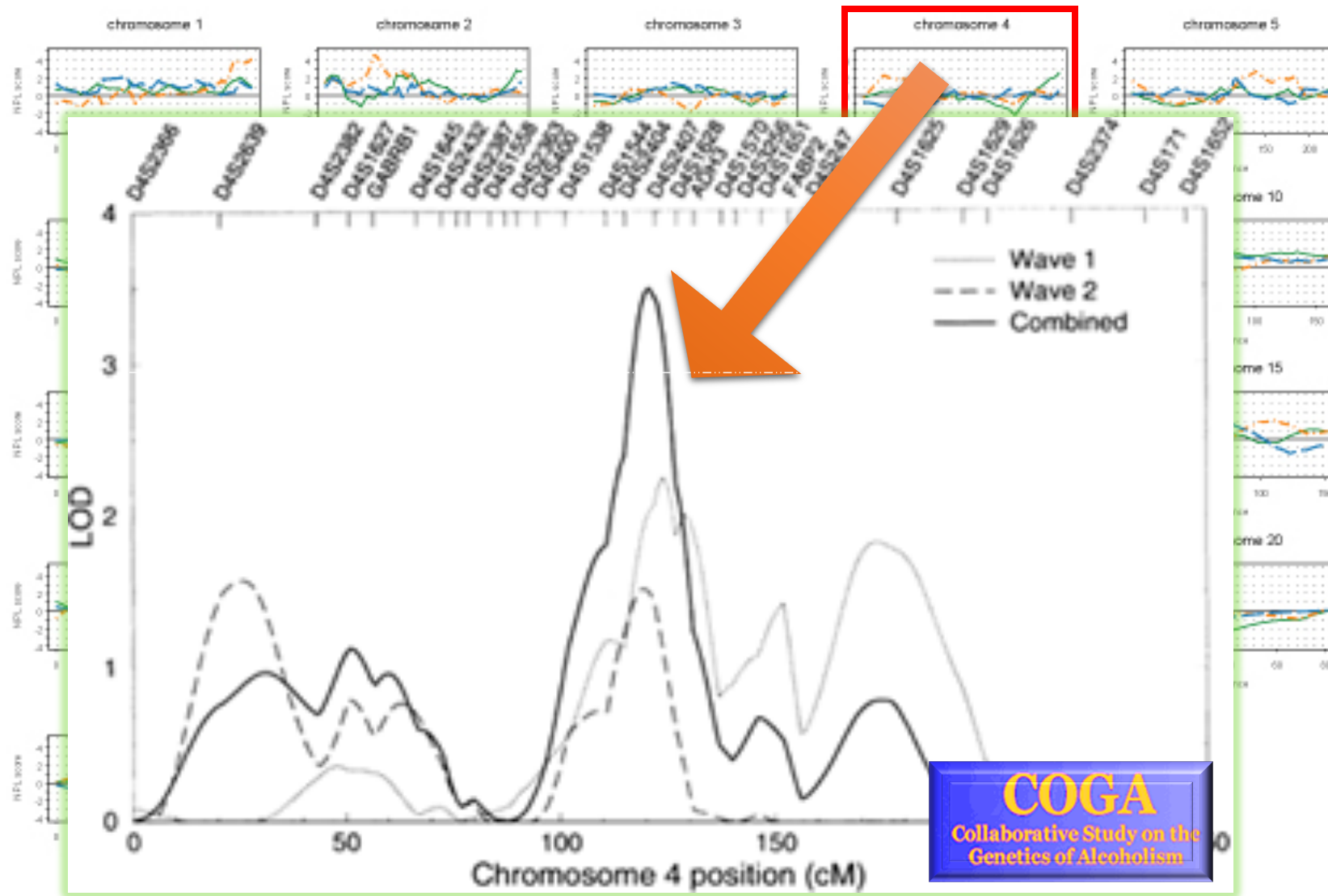
Edenberg H.J. *Addiction Biology*, 2006; Yang H-S. et al., *BMC Genetics*, 2005

Nombre de verres en 24 heures



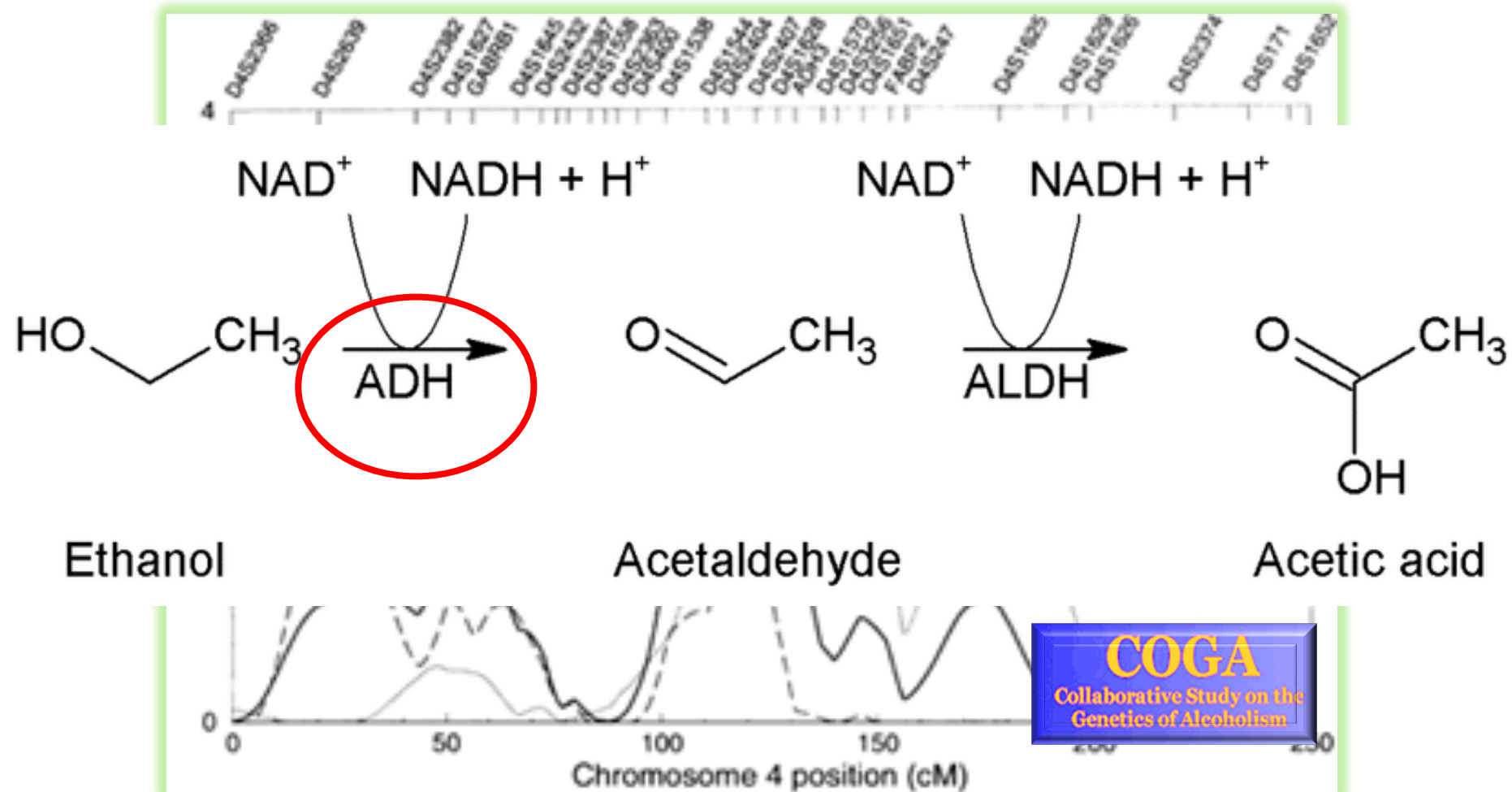
COGA
Collaborative Study on the
Genetics of Alcoholism

Nombre de verres en 24 heures

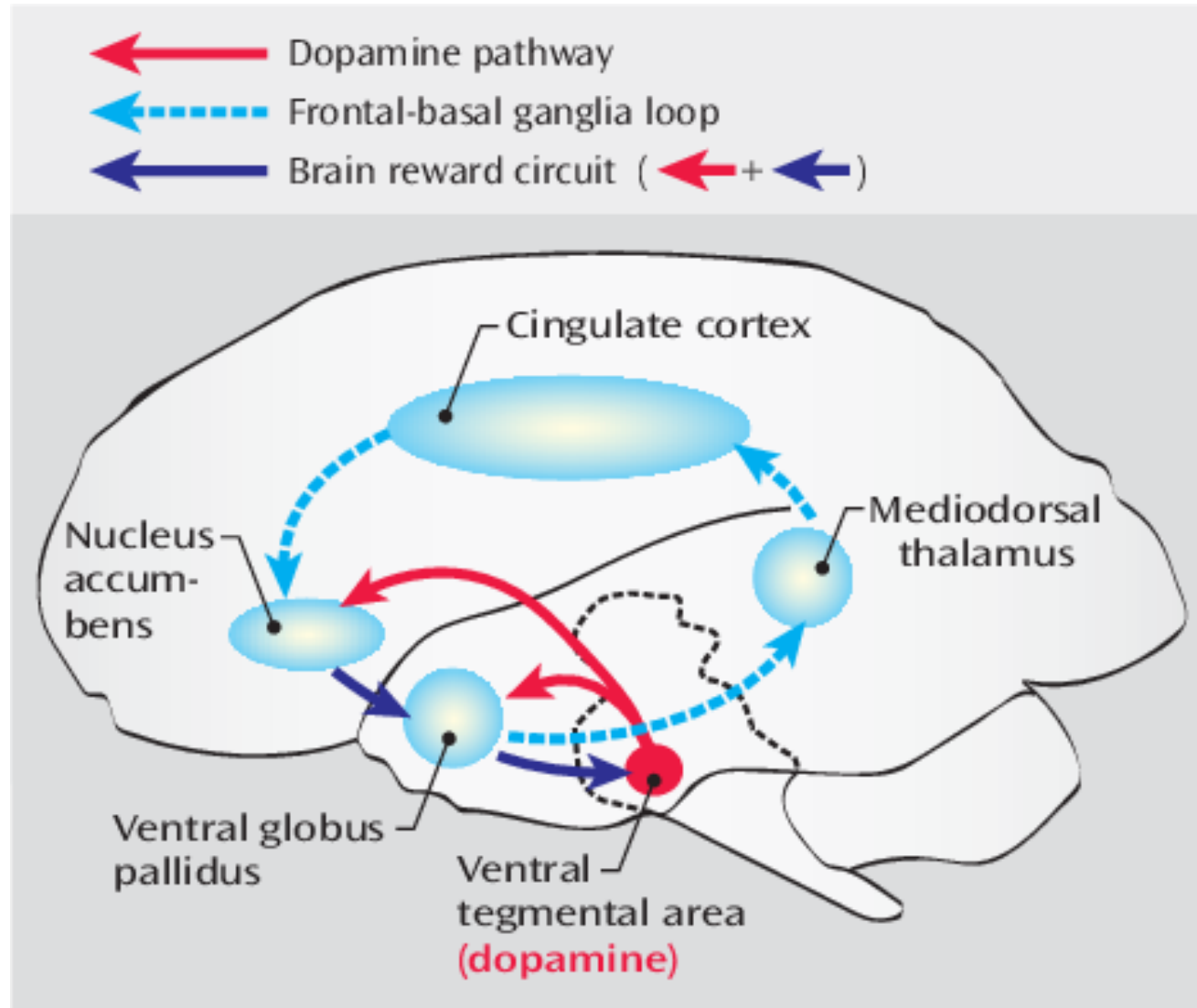


Saccone N.J et al. Am J human Gen 2000

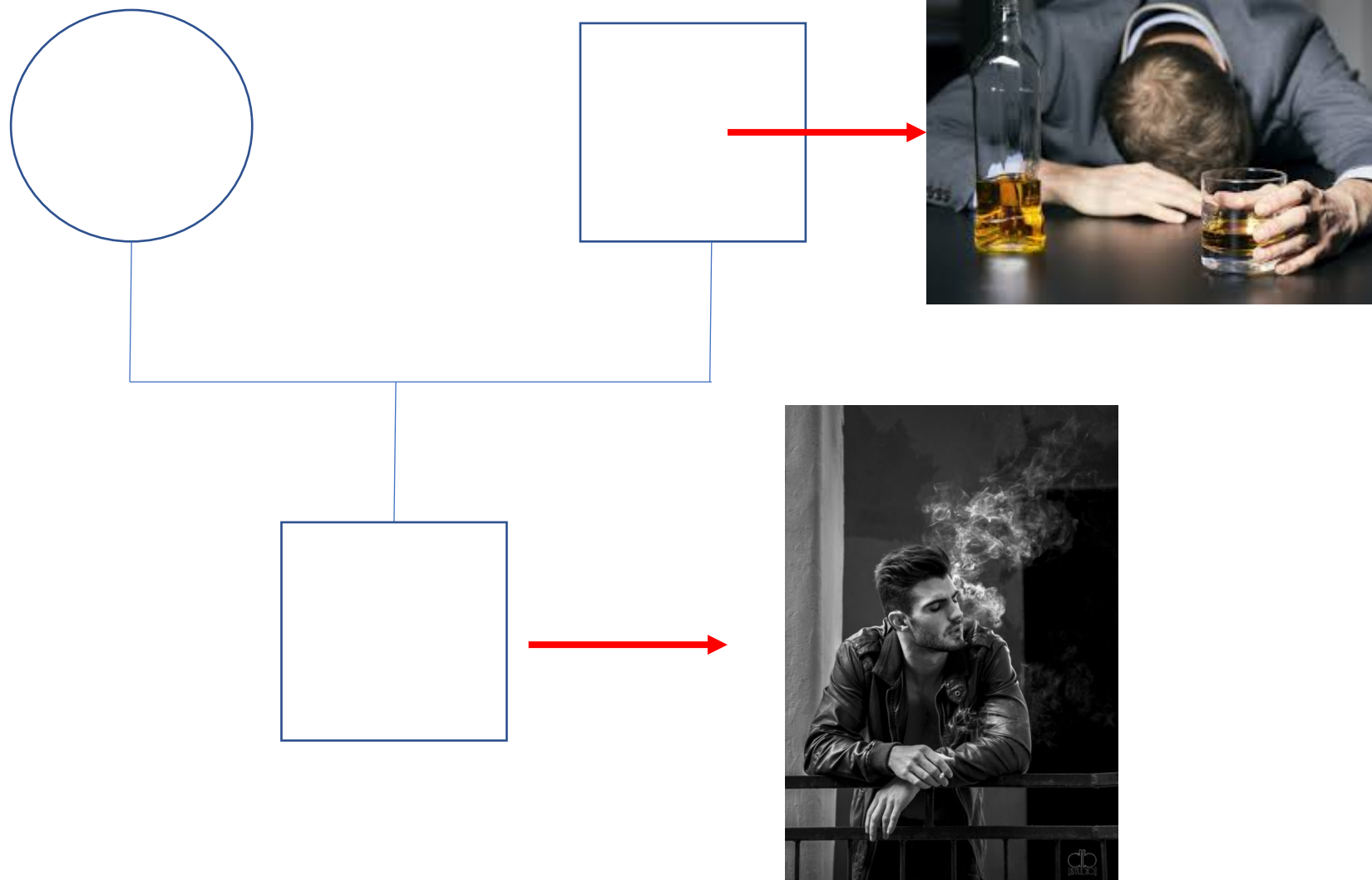
Nombre de verres en 24 heures



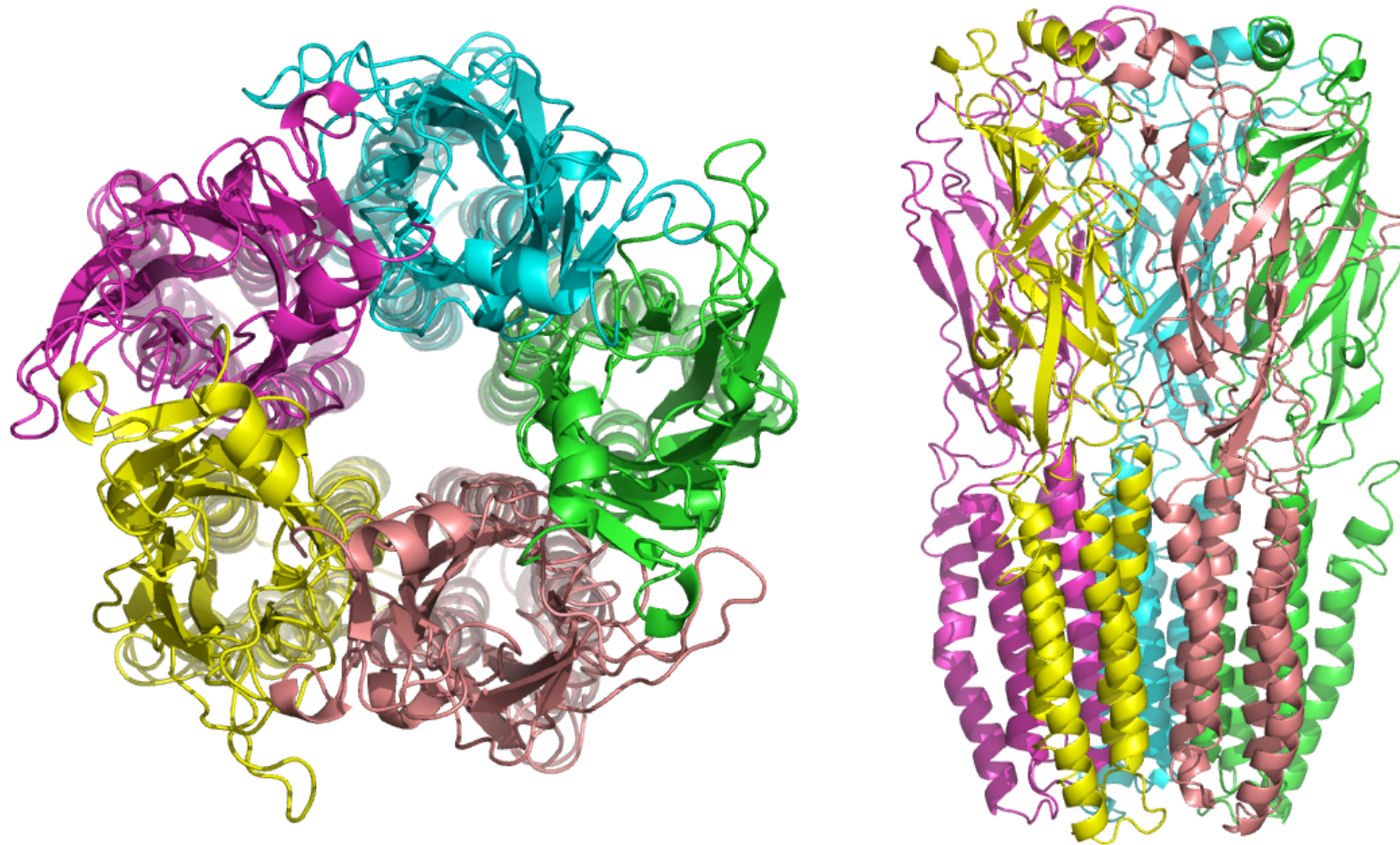
Les voies dopaminergiques de la récompense



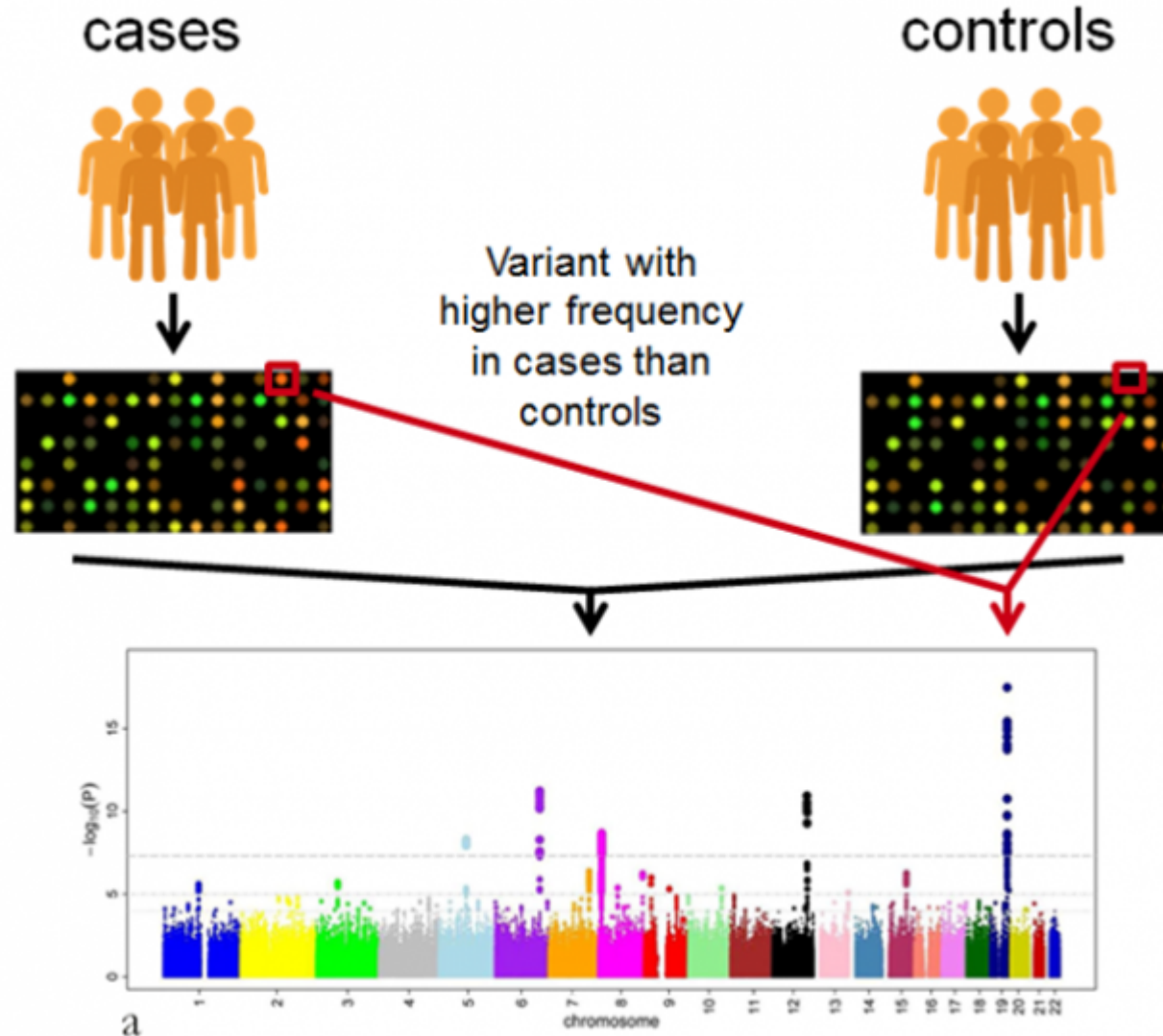
Agrégation familiale volume 2



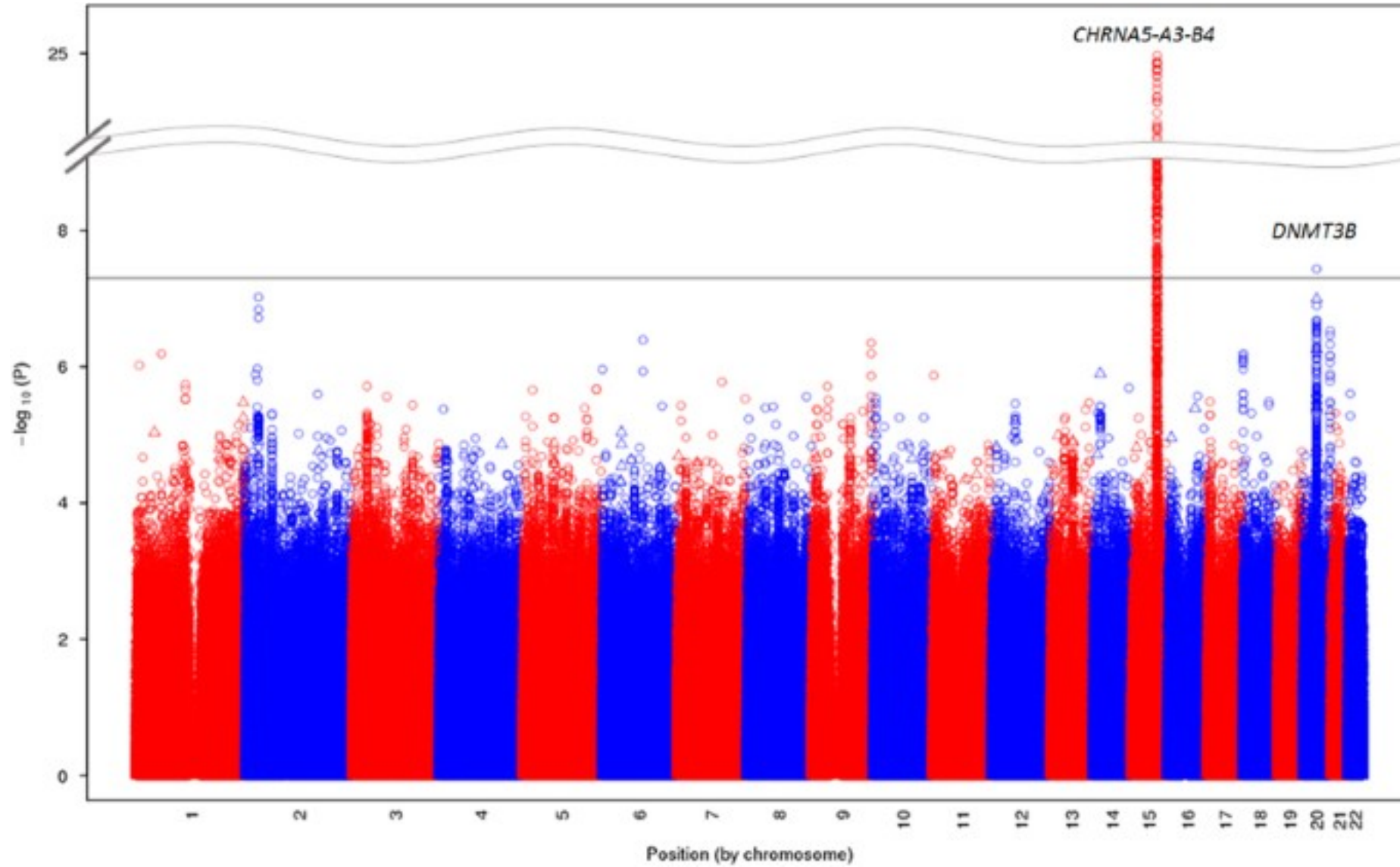
Le récepteur à l'acétylcholine



GWAS

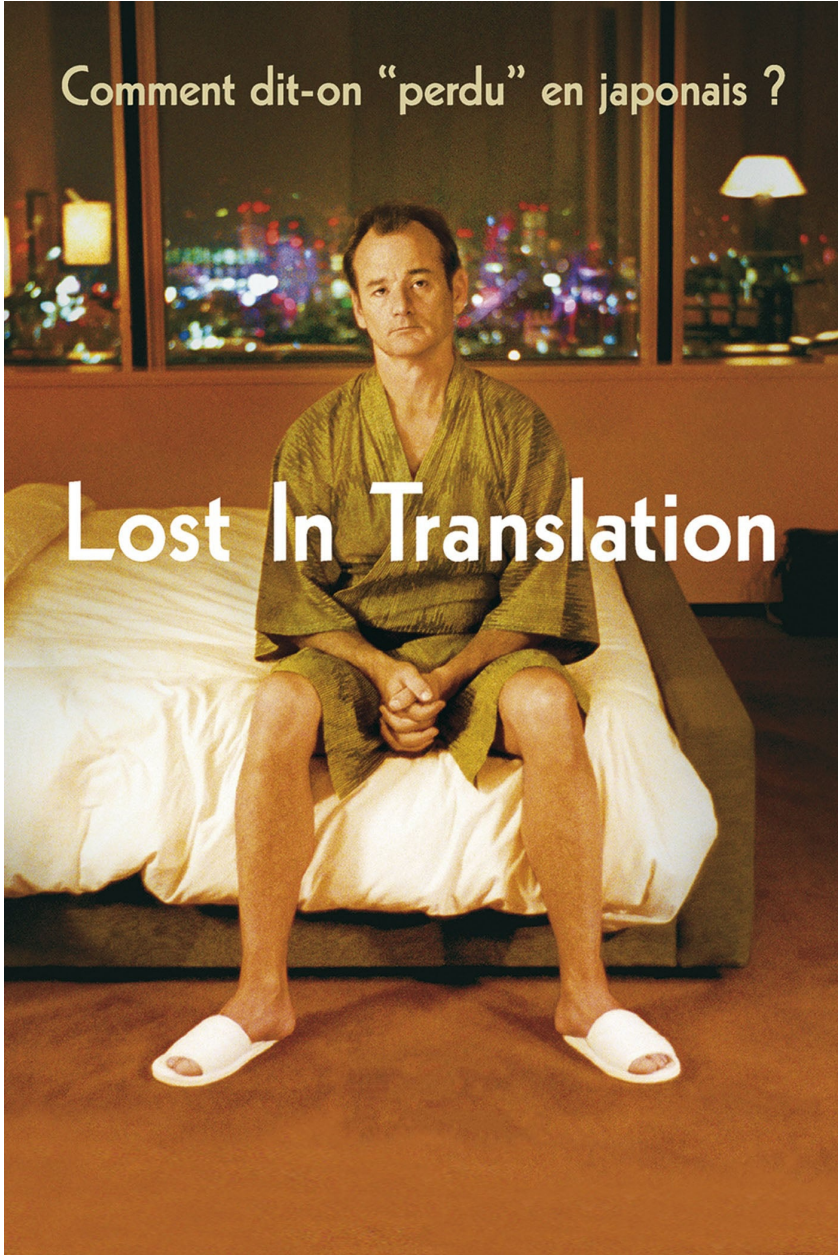


GWAS et tabac

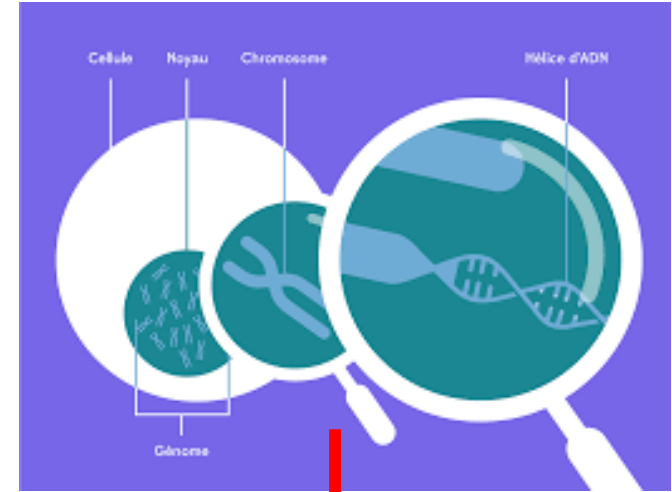


Comment dit-on "perdu" en japonais ?

Lost In Translation

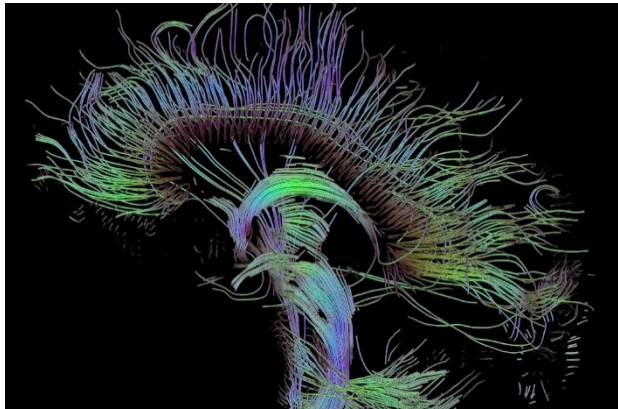


Le futur



Le retour à la clinique





Vulnérabilité génétique et biomarqueurs

Pr Yann Le Strat

Service de psychiatrie et addictologie

Hôpital Louis Mourier, Colombes

Institut de Psychiatrie et Neurosciences de Paris